

SOTTILE THEATRE



Preserve • Restore • Enrich

S I N C E 1 9 2 7



COLLEGE of
CHARLESTON



CONTENTS

CONTACT INFORMATION

HISTORY OF THE THEATRE

BOOKING SOTTILE

- PLACING A HOLD
- RENTAL CONTRACT
- CHALLENGING A HOLD
- RENTAL RATES
- DEPOSITS & FINAL PAYMENTS

GENERAL THEATRE INFORMATION

- RENTAL RATES AND FEES 2022/2023
- SEATING CHART & ACCESS
- BACKSTAGE AREAS
- LOADING & UNLOADING
- PARKING & DIRECTIONS

CAMPUS SERVICES

- CATERING AND CONCESSIONS
- DINING SERVICES

SOTTILE QUICK GUIDE MAP

TECHNICAL SPECIFICATIONS

- STAGE
- RIGGING SYSTEM
- SOFT GOODS
- ADDITIONAL STAGE GOODS
- LIGHTING SYSTEMS & INVENTORY
- AUDIO SYSTEMS & INVENTORY
- FILM, VIDEO, & PROJECTION EQUIPMENT
- ADDITIONAL EQUIPMENT
- INTERNET & WIFI INFO
- LINESET SCHEDULE

CONTACT INFORMATION

SOTTILE THEATRE:

WEBSITE: SOTTILE.COFC.EDU

GENERAL CONTACT: SOTTILETHEATRE@COFC.EDU

Physical Address

44 GEORGE ST.
CHARLESTON, SC 29401

Shipping Address

66 GEORGE ST.
CHARLESTON, SC 29424

THEATRE STAFF:

Director of Operations | ANJA KELLEY

KELLEYAU@COFC.EDU

OFFICE: 843.953.6340

CELL: 843.718.4037

Ticketing & Patron Svcs Mgr | CAROLYNA RAMIREZ

RAMIREZCA@COFC.EDU

OFFICE: 843.953.0833

CELL: 843.509.5022

Technical Director | EVIE PALMISANO

PALMISANOEA@COFC.EDU

OFFICE: 843.953.1599

CELL: 803.818.8297

Asst. Technical Director |

OFFICE:

CELL:

CAMPUS INFORMATION:

PUBLIC SAFETY

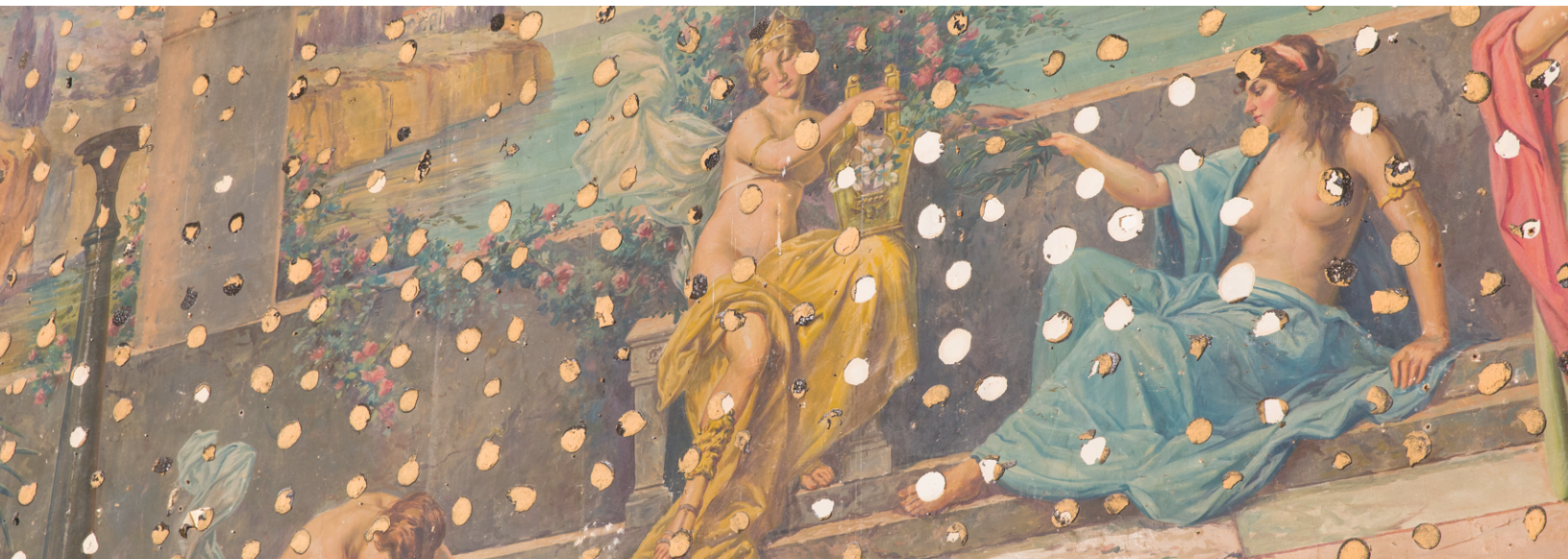
EMERGENCIES: 911

NON-EMERGENCIES: 843.953.5609

CATERING & CONCESSIONS

CATERING@COFC.EDU

OFFICE: 843.953.5669



HISTORY OF THE THEATRE

Opened on August 20, 1927 as a showcase for vaudeville, touring shows, and movies, the Gloria Theater was built by Albert Sottile and operated by his Pastime Amusement Company for nearly fifty years. Designed as a smaller version of the great movie palaces of the era, it seated nearly 2,000 and was lauded for the grandeur of its architecture and design. The theater continually provided entertainment for Charleston residents until its closing in 1975 and is the only one of Albert Sottile's many beautiful movie houses that is still operating as a performing arts space today.

The College of Charleston acquired the Gloria from the Sottile family in 1976 and began renovations and refurbishments on the theater a decade later. During the years of disuse, the theater fell into disrepair. The initial renovations included urgently needed repairs to the building; preservation of many of the theater's original details including the illuminated blue dome with its twinkling stars, the addition of heating and air conditioning, an expanded stage, and a rear addition to house dressing rooms, a green room, and much needed storage space. When the theater's doors opened again in February 1990, it was as the newly named Sottile Theatre - in honor of Albert.



The most recent renovation in 2019 focused on modernizing and updating the stage house, replacing the Theatre's original 1920's hemp rigging system with a modern counterweight system, expanding the wing space and stage access, and the addition of an automated orchestra pit lift.

Additionally, the Theatre's decorative murals, which were discovered behind acoustic tiles in 2011, have been restored and returned to their original beauty. Painted on canvas by Italian artists in the 1920s, one scene depicts a centaur and nymphs before a forested and mountainous background. The other shows classical figures celebrating music and drama before a blue-green sea.

The Sottile Theatre hosts a wide variety of events in the performing arts, serving as the site of many College of Charleston events and programs, as well as many community-oriented and privately sponsored events.

BOOKING THE THEATRE

A. PLACING A HOLD

Hold requests will be accepted up to 12 months in advance for any available dates. Any requests more than one year in advance will be considered tentative. All hold requests must be made via the Rental Request Form available on the Sottile website.

All hold requests will be valid for 30 days or until challenged by another client. After 30 days, a client must sign a contract and provide full payment for all deposits and advance fees. If you are the first to request a date, you are given the “first hold” for that date, giving the first right of refusal (we will not offer that date to another party without first giving you the opportunity to secure the date with an executed contract and deposit).

If a hold already exists on a date(s) in which you are interested, a secondary hold can be requested for that date(s). This gives you the option to execute a contract should those holds above yours not finalize arrangements.

B. RENTAL CONTRACT

Once an event has been approved and the dates confirmed, an initial discussion between the Renter and the Director of Operations will provide information for a preliminary Event Cost Estimate. A Rental Contract will then be issued and must be signed and returned, along with the Deposit, within 10 business days. If the Agreement, Estimate and Deposit are not returned signed within 10 business days, the Theatre reserves the right to release the dates held. The Renter will be notified of the release.

C. CHALLENGING A HOLD

If a date has a “first hold” or a Contract and Deposit have not been received, a second client can challenge the hold through the following procedures:

- The Challenger must notify the Director of Operations by email of the dates they are challenging and submit a deposit for the full facility rental.
- The first Client will be notified by phone and in writing of the challenge for the date and will have 2 business days after notification to submit a non-refundable deposit* for the full facility rental and a signed Rental Contract.
- Should the first Client release the date or not meet the deadline of 2 business days, the Challenger must execute a Rental Contract within 48 hours and the facility deposit will become non-refundable*.
- Should the first party secure the date, the Challenger’s deposit check will be voided and returned.

D. RENTAL RATES

Please refer to the rate sheet for a list of all charges. Any questions about the rate sheet should be directed to the Theatre’s Director of Operations prior to signing the contract.

E. DEPOSITS AND FINAL PAYMENTS

All Rental Contracts must be accompanied by a deposit (50% of the total facility rental fee), except in the case of a challenge booking in which case 100% of the facility rental fee is required and is non-refundable.

First time renters may also be required to pay estimated tech and labor expenses in addition to rent at the time of the signing of the Rental Contract.

Any renter who in a previous rental exceeded 90 days past due or had a payment returned for insufficient funds, will be required to pay the total estimate in advance via cashier's check or money order with the signed contract.

Any remaining facility rental fee will be due two weeks (14 days) prior to load in.

A final bill, with tech and labor fees, will be issued to the Renter within 30 days of load out and will be due within in 30 days of invoice date.

**Deposits received through the challenge process will not be refunded under any circumstance regardless of when a cancellation occurs.*

RENTAL RATES & FEES 2022 / 2023

FACILITY RENTAL		{ Standard Rate }	{ 501©3 Rate }
*Discounted facility rental rates are offered to non profit organizations with proof of 501©3 status.	PERFORMANCE DAY (14 hrs)	\$1500/day	\$1000/day
	REHEARSAL DAY (14 hrs)	\$750/day	\$500/day
	TECH DAY (4 hr MAX)	\$250/day	\$250/day
	AFTER HOURS (over 14 hrs or before 8am & after 12am)	\$300/hour	\$300/hour
	ADDT'L PERFORMANCE ON SAME DAY	\$250	\$250

STAFFING & LABOR		
The Sottile Theatre reserves the right to determine the minimum number of event staff required.	TECHNICAL DIRECTOR (first 8 hrs/day)	\$30/hour
	OVERTIME RATE	\$45/hour
	ASST TECHNICAL DIRECTOR (first 8 hrs/day)	\$24/hour
	OVERTIME RATE	\$36/hour
	HOUSE MANAGER (first 8 hrs/day)	\$18/hour
	OVERTIME RATE	\$27/hour
	STAGE HANDS (first 8 hrs/day)	\$18/hour
	OVERTIME RATE	\$27/hour
	SPECIALIZED TECHNICIAN (first 8 hrs/day)	\$24/hour
	OVERTIME RATE	\$36/hour

PUBLIC SAFETY/SECURITY		
*Four Hour Minimum		\$49.97/hour

HOUSEKEEPING		
Add'l costs may apply based on condition of theatre and backstage areas.	EACH PERFORMANCE DAY	\$100/day
	TWO OR MORE PERFORMANCES ON SAME DAY	\$150/day

EQUIPMENT		
	BARCO PROJECTOR + 10' x 17' SCREEN	\$250/day
	CHRISTIE MOVIE PROJECTOR + 20' x 40' SCREEN	\$400/day
	MARLEY DANCE FLOOR	\$250 + \$35/day
	FABRIC COLUMNS (4 available)	\$25/each
	ORCHESTRA SHELL (per event + labor)	\$300
	FOG MACHINES (per performance)	\$100
	ORCHESTRA PIT SEATING (per event + labor)	\$300

Lessee is responsible for above costs, which include all labor and services provided by the Sottile Theatre and the College of Charleston.

****ALL LABOR RATES ARE SUBJECT TO CHANGE UPON WRITTEN NOTICE UP TO 120 DAYS PRIOR TO LESSEE LOAD-IN****

SOTTILE THEATRE

Preserve • Restore • Enrich

STAGE

{ ORCHESTRA: 659 seats + 18 handicap accessible }

				9	7	5	3	1	
			11	9	7	5	3	1	
		13	11	9	7	5	3	1	
	15	13	11	9	7	5	3	1	
	15	13	11	9	7	5	3	1	
	15	13	11	9	7	5	3	1	
	15	13	11	9	7	5	3	1	
17	15	13	11	9	7	5	3	1	
17	15	13	11	9	7	5	3	1	
17	15	13	11	9	7	5	3	1	
17	15	13	11	9	7	5	3	1	
17	15	13	11	9	7	5	3	1	
17	15	13	11	9	7	5	3	1	

A	114	113	112	111	110	109	108	107	106	105	104	103	102	101
B	114	113	112	111	110	109	108	107	106	105	104	103	102	101
C	114	113	112	111	110	109	108	107	106	105	104	103	102	101
D	114	113	112	111	110	109	108	107	106	105	104	103	102	101
E	114	113	112	111	110	109	108	107	106	105	104	103	102	101
F	114	113	112	111	110	109	108	107	106	105	104	103	102	101
G	114	113	112	111	110	109	108	107	106	105	104	103	102	101
H	114	113	112	111	110	109	108	107	106	105	104	103	102	101
J	114	113	112	111	110	109	108	107	106	105	104	103	102	101
K	114	113	112	111	110	109	108	107	106	105	104	103	102	101
L	114	113	112	111	110	109	108	107	106	105	104	103	102	101
M	114	113	112	111	110	109	108	107	106	105	104	103	102	101
N	114	113	112	111	110	109	108	107	106	105	104	103	102	101
P	114	113	112	111	110	109	108	107	106	105	104	103	102	101

A	2	4	6	8	10					
B	2	4	6	8	10	12				
C	2	4	6	8	10	12	14			
D	2	4	6	8	10	12	14	16		
E	2	4	6	8	10	12	14	16		
F	2	4	6	8	10	12	14	16		
G	2	4	6	8	10	12	14	16		
H	2	4	6	8	10	12	14	16		
J	2	4	6	8	10	12	14	16	18	
K	2	4	6	8	10	12	14	16	18	
L	2	4	6	8	10	12	14	16	18	
M	2	4	6	8	10	12	14	16	18	
N	2	4	6	8	10	12	14	16	18	
P	2	4	6	8	10	12	X	X	X	

21	19	17	15	13	11	9	7	5	3	1
21	19	17	15	13	11	9	7	5	3	1
21	19	17	15	13	11	9	7	5	3	1
21	19	17	15	13	11	9	7	5	3	1
21	19	17	15	13	11	9	7	5	3	1
21	19	17	15	13	11	9	7	5	3	1
21	19	17	15	13	11	9	7	5	3	1
21	19	17	15	13	11	9	7	5	3	1

Q	111	110	109	108	107	106	105	104	103	102	101
R	111	110	109	108	107	106	105	104	103	102	101
S	111	110	109	108	107	106	105	104	103	102	101
T	111	110	109	108	107	106	105	104	103	102	101
U	111	110	109	108	107	106	105	104	103	102	101
V	111	110	109	108	107	106	105	104	103	102	101
W											
X											

Q	2	4	6	8	10	12	14	16	18	20	22
R	2	4	6	8	10	12	14	16	18	20	22
S	2	4	6	8	10	12	14	16	18	20	22
T	2	4	6	8	10	12	14	16	18	20	22
U	2	4	6	8	10	12	14	16	18	20	22
V	2	4	6	8	10	12	14	16	18	20	22
W	2	4	6	8	10	12	14	16	18	20	22
X	2	4	6	8	10	12	14	16	18	20	22

WC9	WC7	WC5	WC3	WC1
HANDICAP SEATING				
9	7	5	3	1

Y	TECHNICAL BOOTH (no audience seating)										
Z											

Y	WC2	WC4	WC6	WC8
HANDICAP SEATING				
Z	2	4	6	8

{ MEZZANINE: 56 balcony + 52 box seats }
NO ELEVATOR ACCESS TO THIS LEVEL

5	4	3	2	1
10	9	8	7	6

BOX F

4	3	2	1
8	7	6	5

BOX E

4	3	2	1
8	7	6	5

BOX D

4	3	2	1
8	7	6	5

BOX C

4	3	2	1
8	7	6	5

BOX B

5	4	3	2	1
10	9	8	7	6

BOX A

7	5	3	1	
9	7	5	3	1
9	7	5	3	1

AA	109	108	107	106	105	104	103	102	101
BB	109	108	107	106	105	104	103	102	101
CC	109	108	107	106	105	104	103	102	101

AA	2	4	6	8	10
BB	2	4	6	8	10
CC	2	4	6	8	10

Elevator access is not available to the BASEMENT or MEZZANINE levels. An elevator for those unable to climb stairs moves between STREET and ORCHESTRA levels

BACKSTAGE AREAS

FIRST FLOOR/STAGE LEVEL

Green Room - 13' 2" x 35' 1"

- Furniture: 1 buffet, 4 arm chairs, 1 couch, 1 coffee table, 1 high-top table, 8 high-top chairs, 2 lamps, 2 end-tables with attached lamps
- Equipped with 2 stage-feed audio monitors, 1 stage-feed visual monitor, 1 kitchenette, 1 minifridge, 1 first aid kit, and 1 closet with full-length mirror

Handicap Accessible Restroom - 7' 7" x 10' 4"

- Equipped with handicap accessible shower, sink, and toilet

Low Bay & High Bay - details listed below

BASEMENT LEVEL

(2) Large Dressing Rooms - 37' 5" x 5' 9"

- 2 shower rooms, 2 restrooms, 3 sinks, 14 vanity stations
- Equipped with 1 stage-feed monitor, 16 chairs

Trap Room & Orchestra Pit - Restricted Access

SECOND FLOOR

(2) Medium Dressing Rooms - 11' 4" x 10' 4"

- 1 shower room, 1 restroom, 1 sink, 5 vanity stations
- Equipped with 1 stage-feed monitor, 8 chairs

(2) Small Dressing Rooms - 5' 10" x 8'

- 1 shower room, 1 restroom, 1 sink, 1 vanity station
- Equipped with 1 stage-feed monitor, 2 chairs

Laundry Room - 8' 4" x 15' 10"

- Equipped with washer, dryer, utility sink, iron, ironing board, steamer, drying rack, stage-feed monitor

All backstage areas are accessible by elevator, ramp, or stairs.

LOADING & UNLOADING

LOADING ZONE

Location: Along the back side of the Theatre

Dimensions: 85' 3" x 20' 1"

The loading zone is designed for cars and small box trucks. Larger vehicles (semi-trucks and tour buses) cannot be accommodated. If your show will be loading in/out from a large vehicle, please contact the TD as soon as possible to discuss options.

Loading/unloading from George Street will not be allowed without a permit from the City of Charleston. The renter is responsible for arranging street permits from the City; Sottile Theatre will not arrange for this permit.

LOADING BAYS

The Sottile Theatre loading bay doors are at stage/street level. **The Theatre does NOT have a loading dock.** Trucks with lift gates or ramps are strongly recommended.

LOW BAY – Accessible from SL Wing

- Location: Northwest side of building; loads into an area offstage left
- Exterior Door Dimensions (HxW): 9' 11" x 9' 11"
- Interior Bay Door Dimensions (leading to the stage): 9' 8" x 10' 1"
- Bay Dimensions: 14' 2" x 21' 10"
- NOTE: this bay is not at stage level, but about 10 inches *higher* than the stage floor. For your convenience, there is a 4' 9" wide removable metal ramp in place.

HIGH BAY – Accessible from SR Wing and USR back wall

- Location: Southwest side of the building; loads into an area offstage right
- Exterior Door Dimensions (HxW): 10' x 8'
- Interior Bay Door Dimensions (leading to the stage):
 - Door 1: 16' 1" x 8' 6"
 - Door 2: 13' 8" x 8'
- Bay Dimensions: 18' 2" x 30' 1"

PARKING & DIRECTIONS

PATRON PARKING

There are three parking garages located near the Theatre that are available for event parking:

- St. Philip Street Garage at 89 St. Philip St. between Vanderhorst and Calhoun streets
- George Street Garage at 34 St. Philip St. between George and Liberty streets

LOADING ZONE PARKING

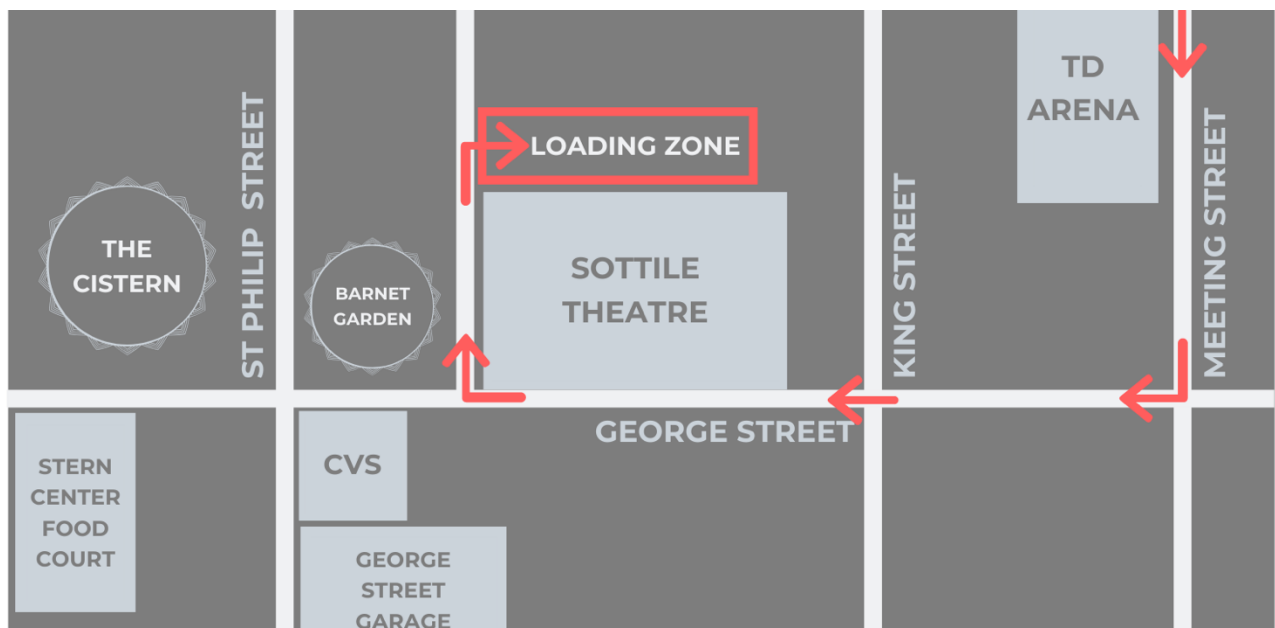
The Sottile Theatre Loading Zone is available for use by Renters from Load-In Date to Load-Out Date. Up to six cars, dependent upon size, can fit in the Loading Zone. Permits will be issued at Load-In and must be displayed at all times. Vehicles without a visible permit are subject to ticketing and towing at owner's expense. It is the Renter's responsibility to make sure all cars associated with their group have a permit displayed. The Sottile Theatre cannot waive parking fees or fines assessed by the College of Charleston or City of Charleston due to an improperly displayed or missing permit.

BUS & TRUCK PARKING

The Sottile Theatre does not provide parking or shore power for buses or trucks. Please contact the Technical Director to discuss offloading cast/crew members and available locations for bus/truck parking.

DIRECTIONS FROM I-26

From I-26 East: Exit at 221-B and turn right onto Meeting Street. Take Meeting Street to George Street, and turn right onto George Street. Cross King Street, and the theatre's main entrance will be on your right. To access the Loading Zone, take your first right after you pass the Theatre's main entrance. Turn right again at the end of the building. The loading zone runs along the back side of the Theatre. See diagram below.



CAMPUS SERVICES

CATERING & CONCESSIONS

CONCESSIONS

Concessions are available exclusively through ARAMRK for all events with an intermission. Soda, water, snacks, beer and wine* can be sold at the main lobby concession stand at no additional cost to the lessee; however, the lessee shall not be entitled to any share of the proceeds from concessions sales.

CATERING & ALCOHOL

If the lessee wishes to have a catered reception before or after the show, all catering must be provided by Aramark*. Without exception, all alcohol must be served by an ARAMARK bartender; additional corkage fees may apply. To begin the coordinating process, contact:

ARAMARK Catering Sales Coordinator
catering@cofc.edu | 843.953.5669

*Exceptions may be made by Director of Operations on a case-by-case basis with concern to dietary needs, religious beliefs, or donated food. All pricing is subject to change.

DINING SERVICES

The College campus offers numerous dining options, all within a few blocks of the Sottile Theatre. Hours of operation vary depending on the College's schedule and can be checked at:

WEBSITE: charleston.campusdish.com

DINING LOCATIONS

Liberty Fresh Food Company

30 St. Philip Street

All you can eat featuring buffet style options.

City Bistro

80 St. Philip Street

All you can eat featuring buffet style options.

Breakfast: \$10.00

Lunch: \$14.00

Dinner: \$16.00

Marty's Place

96 Wentworth Street

Made-to-order vegan and vegetarian dishes in a kitchen that follows Kosher dietary laws.

Lunch & Dinner: \$9.29 per entree

Chick-fil-A

162C Calhoun Street

Prices vary

Stern Center Food Court

71 George Street

Prices vary

Starbucks

205 Calhoun St - *located inside the Addlestone Library*

Coffee, tea, specialty beverages, pastries, and sandwiches.

Prices vary

ST PHILIP ST
GARAGE

FEDEX
OFFICE

CITY
BISTRO

CHICK-FIL-A

BARNES &
NOBLE
BOOKSTORE

MARION
SQUARE

CALHOUN STREET

THE
CISTERN

ST PHILIP STREET

BARNET
GARDEN

SOTTILE
THEATRE

LOADING ZONE

TD
ARENA

KING STREET

MEETING STREET

STERN
CENTER
FOOD
COURT

CVS

GEORGE STREET

GEORGE
STREET
GARAGE

FRESH
FOOD
COMPANY

LIBERTY STREET

MARTY'S
PLACE

WENTWORTH STREET

WENTWORTH
GARAGE

SOTTILE THEATRE TECHNICAL SPECIFICATIONS

STAGE

STAGE FLOOR

Material: Polyonyx+® Performance Flooring
Color: Black

STAGE DIMENSIONS

Proscenium: 46' 6" W x 26' 11" H
Grid Height: 54'
Stage Deck:
Width: 76' - SR lockrail to SL wall
Depth: 26' 10" - plaster line to USR wall
25' - plaster line to US wall at CL
23' 10-1/2" - plaster line to USL wall
US wall is not parallel to plaster line

Wings:
SL: 17' - plaster line to SL wall
SR: 12' 6" - plaster line to SR lockrail

Apron without Pit Cover:
Width: 47' 6" - at the proscenium arch
Depth: 9' 2-1/2" - from plaster line at CL
4' 8" - from plaster line at SL and SR

Apron plus Pit Cover:
Width: 40' 6" - US width of pit cover
52' 4" - DS width of pit cover
Depth: 20' 3" - from plaster line at CL
17' 5" - from plaster line at SL and SR

ORCHESTRA PIT DIMENSIONS

Length from US to DS Orchestra Pit walls:
At Center: 20' 4"
SR and SL: 17' 6"
Height to stage floor: 8' 1"
Access: 2 US doors from Trap Room

ORCHESTRA PIT LIFT

SERAPID Automated Lift with Rigid Chain Technology
Lift Points: 6
Control Locations: Stage Left Downstage Wing wall panel and Stage Right Pit Cover floor panel
Rated load:
Static: 81,000 lbs
Lifting: 27,000 lbs
Total Travel Distance: 8' 1"
Playing Positions: Orchestra Pit, House Floor, Stage

RIGGING SYSTEM

Type: Single Purchase Counterweight
Lockrail Location: Stage Right Wall
Linesets: 35 - see lineset schedule for detailed information
Batten Length: 60'
Batten Type: 1-1/2" Sch. 40 steel pipe
Arbor Capacity: 1400 lbs

SOFT GOODS

MAIN CURTAIN (two panels)

Type: Guillotine
Color: Burgundy
Material: 26oz Prestige Velour
Size: 41' 6" x 30' (each panel), 100% fullness

VALENCE

Color: Burgundy
Material: 26oz Prestige Velour
Size: 60' x 12', 100% fullness

MASKING CURTAINS

5 Borders: 60' x 8', 22oz Encore Velour, no fullness
4 Legs: 10' x 26', 22oz Encore Velour, no fullness
10 Legs: 10' x 24', 22oz Encore Velour, no fullness

FULL STAGE BLACK

Type: Guillotine
Material: 22oz Encore Velour
Size: 60' x 27', no fullness

CYCLORAMA

Color: White
Material: Muslin
Size: 50' x 30'

SCRIM

Color: Black
Material: Sawtooth weave
Size: 60' x 23' 9"

ADDITIONAL GOODS

4 Stretch Columns
Color: White
Material: Poly-fiber
Size: 25' tall

ADDITIONAL STAGE GOODS

MARLEY FLOOR

Harlequin Cascade Dance Floor
Color: Black
Finish: Matte
Size: Custom cut to fit from US wall to apron (does not extend into wings)
Care: **ABSOLUTELY NO ROSIN PERMITTED ON HOUSE MARLEY**

ORCHESTRA SHELL

Finish: Blonde Wood
Construction: 1 rear wall, 2 side walls, and 3 ceiling panels with light cutouts

ATMOSPHERIC EFFECTS

2 Chauvet DJ Cumulus Low-Lying Fog Machine
1 Look Solutions Viper NT Fog Machine
1 Look Solutions Viper NT Fog Machine

LIGHTING SYSTEMS INFORMATION

REPERTORY PLOT

The Theatre maintains a year-round repertory plot. The Technical Director must approve, IN ADVANCE, any alternative lighting needs or equipment brought in from outside vendors.

CONSOLE & CONTROL

Console: **ETC Gio**

Location: Production Booth at rear of house

COMPANY SWITCHES

1	400A, 3-phase, cam-lock	Location:	Stage Left Jump
1	200A, 3-phase, cam-lock	Location:	Stage Left Ladder Closet
1	100A, 3-phase, cam-lock	Location:	Stage Left Jump
	Miscellaneous 110V Edison	Location:	Offstage and upstage walls

DIMMERS

300 House Dimmers: ETC Sensor3 @ 2.4kW

96 Portable Dimmers: ETC Sensor3 Touring Rack @ 2.4kW

HOUSE LIGHTS

The house lights can be controlled from the light board, a touch panel in the SL wing, or at two preset panels located on the rear wall of the house. Lock out controls possible.

POSITIONS

	1st Catwalk:	13' from proscenium @ 65°
	2nd Catwalk:	26' 2-5/8" from the proscenium @ 47°
	NEW Front Lighting:	105' from proscenium @ ~30°
	Location:	Above balcony seating
2	Box Booms:	Top rung @ 45°, Bottom rung @ 23°
	Location:	HL and HR mounted to 2nd Catwalk
6	Dance Booms:	16' steel frame on casters with adjustable positions
	Location:	SL and SR in first 3 wings

For onstage, overhead lighting positions, see lineset schedule.

LIGHTING INSTRUMENT INVENTORY

ZOOMSPOTS

9 Selecon 23~50° @1kW

ELLIPSOIDALS

102 ETC Source4 ERS @750W with stage pin

8 ETC Source4 Lustr 2 with edison

ELLIPSOIDAL BARRELS

14 10° barrels

6 14° barrels

16 19° barrels

26 26° barrels

15 36° barrels

26 50° barrels

LEDS

ETC Selador Vivid-R with stage pin

20 11" fixtures

30 21" fixtures

7 63" fixtures

FOLLOW SPOTS

2 Robert Juliat Topaze 1200W

Location: HL and HR in balcony spot booths

PARS

15 Altman PAR64

26 ETC Source Four PARnel

AUDIO EQUIPMENT AND SYSTEMS INFORMATION

CONSOLE & CONTROL

- Console: **Midas M32**
 - Location: Production Booth in rear of house
 - Inputs: 40
 - Mix Busses: 25
 - Preamps: 32
- 2 Stagebox: **Midas D16**
 - Location: SL Wing Audio Rack
 - Inputs: 16
 - Outputs: 8
- Remote Control: M32 Mix mobile app via WiFi

AUDIENCE HEARING ASSISTANCE

- 28 Sennheiser Assistive Listening Headsets (with earbuds and neck loop)

MONITOR/PAGING SYSTEM

Green Room and all dressing rooms are equipped with stage feed and paging monitors. Calls can be made through god mic by audio operator from the production booth.

PRODUCTION COMMUNICATION

- 1 Clear-Com DX200 Wireless Base Station
 - Location: SL Wing Audio Rack
- 1 Clear-Com MS-702 Wired Base Station
 - Location: Production Booth in rear of house
- 2 Wired Clear-Com belt packs
 - Location: Production Booth
- 8 Wireless Clear-Com belt packs
 - Location: Backstage

SPEAKERS

Center:

- 1 KV2 Audio EX15 - 1000W 15" 3-Way Powered Loudspeaker
 - Location: Suspended from 1st catwalk

Stage Mains:

- 2 KV2 Audio ESR 215 3-Way Passive Loudspeaker
 - Location: Left and right of proscenium

Subwoofer:

- 1 KV2 Audio EX 2.2 - 1000W Active Subwoofer
 - Location: Suspended from 1st catwalk

Monitors:

- 4 KV2 Audio ESD-5 2-Way Passive Loudspeaker
 - Location: Suspended from 1st & 3rd LX onstage
- 2 QSC K10.2 2-Way Powered Loudspeaker
 - Location: DSL and DSR in each wing
- 2 JBL JRX212 - 250W 12" 2-Way Passive Loudspeaker
 - Location: Apron DS on either side of CL - ONLY INSTALLED UPON REQUEST

Power Amplifiers:

- 5 Crown XLS 1000 High Density Amp
 - Location: SL Wing Amplifier Rack

PLAYBACK

Clients may use their own devices equipped with a 1/8" jack for playback. Devices without a 1/8" jack will require the client to bring their own converter. Production audio can be shared with audio operator via Spotify, CD, flash drive, email, or Dropbox.

PLAYBACK DEVICES

Sottile has several available playback devices including a Mac Mini, a MacBook Pro, and a Dell Inspiron laptop

PLAYBACK LOCATIONS

Playback can be routed from the Production Booth or the SL wing with ease. If another location is required, advance notice must be given to the Technical Director.

AUDIO ACCESSORY INVENTORY

MICROPHONES

Dynamic:

6	Shure SM57	4	Blue enCORE 100i
4	Shure SM58	1	Shure PGA52

Condenser:

4	Sennheiser E865	2	Violet Wedge
2	Blue enCORE 300	1	Violet Pearl Vocal
1	AKG CGN99 c/s	1	Shure 809
1	AT857AMLa	2	Astatic 901
2	Shure PGA98H	4	Shure MX392/C
2	DPA d:vote 4099	3	Crown PCC-160
1	Blue SPARK SL	2	Shure KSM137 (matched pair)

Wireless Shure QLX-D System:

4	Shure QLXD/SM58 handheld	8	Shure QLXD1 beltpack
4	Shure QLXD/Beta58 handheld		

QLXD1 Wearable Microphones:

8	Shure WL185	2	Countryman H6
2	Avlex HS-48A	4	Countryman E6i
1	Senal UEM-155		

DIRECT BOXES

2	Radial ProAV1	1	Whirlwind Director
2	Radial ProAV2	1	Whirlwind DIRECT JT
2	Radial Stagebug SB-1		

SNAKES

1	Whirlwind Medusa Standard - 12-channel, 8in/4out, XLR, 150'
1	Whirlwind Medusa Standard - 12-channel, 8in/4out, XLR, 50'
3	Whirlwind Medusa Multitrack - 8-channel, XLR, 10'
1	Whirlwind Medusa Multitrack - 8-channel, 1/4" TRS(M) to XLR(F), 10'

MICROPHONE STANDS

3	Straight - Chrome finish
6	Straight - Black finish
4	Tall Boom - Black finish
9	Medium Boom - Black finish
2	Short Boom - Black finish
3	Tripod Tabletop - Chrome finish
1	Desktop - Black finish

FILM, VIDEO, AND PROJECTION EQUIPMENT

PROJECTORS

Christie L2K1500 LCD 2K Projector (15,000 lumens)

Barco F50 5K Projector (5,000 lumens)

SCREENS

Movie Screen: 40' x 20'

Presentation Screen: 17' x 11' (no full stage masking)

PLAYBACK

Video can be played off any device with an HDMI output.

SWITCHER

ATEM Mini Pro HDMI

Roland V-1HD Video Switcher

AV ACCESSORIES

PerfectCue Signaling System

Logitech Laser Presentation Remote

Assorted HDMI Cables

ADDITIONAL EQUIPMENT

FURNITURE

- 1 Acrylic Podium - clear
- 6 8' folding tables - white plastic top; grey metal legs
- 20 Stacking banquet chairs - blue cushions; black metal frame
- 6 Stools (Black)
- 1 Piano Bench (adjustable, black)
- 30 18" seat musician's chair (black plastic)
- 10 16" seat musician's chair (black plastic)
- 18 Music stands (Black)

WARDROBE

- 1 Steamer
- 1 Ironing Board
- 1 Iron
- 1 Washer
- 1 Dryer
- 6 Portable Wardrobe Racks

LOAD IN

- Assorted Hand Tools
 - Assorted Power Tools
 - Assorted Pneumatic Tools
 - 1 Craftsman 30gal Air Compressor
 - 2 Chair Dollies
 - 1 Appliance Dolly
 - 5 Assorted Floor Dollies
 - 2 8' A-Frame Ladders
 - 1 12' A-Frame Ladder
 - 1 16' Fiberglass Extension Ladder
 - 1 24' Metal Extension Ladder
 - 1 Genie AWP-30S Standard Aerial Lift**
- **To be operated by qualified Sottile personnel only**

INSTRUMENTS

- 1 Roland RD-800 Stage Piano with stand

INTERNET & WIFI ACCESS

Internet is accessible throughout the theatre via Wi-Fi. Internet is provided by the College of Charleston, and therefore requires a CofC account to access the secure network; a freely accessible guest network is available with a guest sign-in.

If you need access to the secure Wi-Fi network during your production, the Sottile can provide you with credentials to sign in via the Theatre's guest account.

SOTTILE THEATRE LINESET SCHEDULE

Blue color coded linesets are occupied and cannot be changed

Lineset	Distance From Plaster Line	Descriptions	Capacity (lbs)	Notes	Batten Length	Motor #s
1	1'-6"	Valence	1400	60'W x 12'H	60'	
2	2'-2"	Main Curtain	1400		60'	
3	2'-10"	Movie Screen	1400	Mounted to steel frame. 40' (12.2M) W x 20' (6.1M) H	60'	
4	3'-6"	Legs	1400	10' W x 24' H	60'	
5	4'-2"		1400		60'	
6	4'-10"	Orchestra Shell Ceiling DS	1400		60'	
7	5'-6"		1400		60'	
8	6'-2"	1st Electric	1400		60'	
9	6'-10"		1400		60'	
10	7'-6"	Presentation Screen	1400	17' x 11' - no full stage masking	60'	
11	8'-2"		1400		60'	
12	8'-10"	Border	1400	50' W x 8' H	60'	
13	9'-6"	Legs	1400	10' W x 24' H	60'	
14	10'-2"		1400		60'	
15	10'-10'		1400		60'	
16	11'-6"		1400		60'	
17	12'-2"	2nd Electric	1400		60'	
18	12'-10"	Orchestra Shell Ceiling CS	1400		60'	
19	13'-6'		1400		60'	
20		Blocked by HVAC system	N/A	Blocked by HVAC system	N/A	
21	14'-10"	Border	1400	50' W x 8' H	60'	
22	15'-6"	Legs	1400	10' W x 24' H	60'	
23	16'-2"		1400		60'	
24	16'-10"		1400		60'	
25	17'-6"		1400		60'	
26	18'-2"		1400		60'	
27	18'-10"		1400		60'	
28	19'-6"	3rd Electric	1400		60'	
29	20'-2"	Orchestra Shell Ceiling US	1400		60'	
30	20'-10"		1400		60'	
31	21'-6"	Legs + Border (same pipe)	1400	Border: 50'W x 8'H; Legs: 10'W x 24' H	60'	
32	22'-2"	4th Electric	1400		60'	
33	22'-10"		1400		60'	
34	23'-6"		1400		60'	
35	24'-2"		1400		60'	
36	24'-10"	Cyclorama	1400	50'W x 30'H	60'	

Updated 08/22/2022 by Evie Palmisano